

SUBDIVISION PLAN OF LOT 9, SEC 4, TP 23, ODYD, PLAN 11656 AND THAT PART OF LOT 13, BLOCK 5, SEC 4, TP 23, ODYD, PLAN 896, SHOWN AS OKANAGAN HWY (PROPOSED) AND TWO PARTS AS 50 FT ACCESS ROAD ALL OF WHICH ARE DEDICATED AS ROAD ON PLAN 11656

PLAN EPP142247

BCGS #2E.093
SCALE 1:500 METRIC

LEGEND

- Denotes Control Monument Found
- Denotes Standard Iron Post Found
- Denotes Standard Iron Post Set
- + Denotes Unimproved Point

Distances shown are horizontal, ground-level distances, in meters and absolute stated.

Integrated Survey Area No. 4, City of Kelowna, NAD83(CRS) 4.0.0 BC. 1.

Grid bearings were derived from GNSS fix to geodetic control monuments 9842135 and 9842136 and are referred to the center meridian of UTM Zone 11.

The UTM coordinates and estimated absolute accuracy achieved are derived from the NAD83(CRS) published coordinates and standard deviation for geodetic control monuments 9842135 and 9842136.

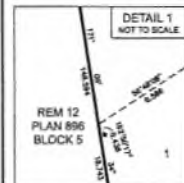
This plan shows horizontal ground-level distances unless otherwise specified. To compute grid distances, multiply ground-level distances by the average combined factor of 0.999995 which has been derived from geodetic control monument 9842135.

NAD83(CRS) 4.0.0 BC.1 UTM ZONE 11 COORDINATES

Point	Northing	Eastng	Absolute Accuracy
9842135	553253.097	325971.136	0.02
9842136	553299.239	326207.361	0.02

0 10 20 30 40 50
The intended plot size of this plan is 660mm in width by 900mm in height (D size) when plotted at a scale of 1:500 METRIC.

REM 12
PLAN 896
BLOCK 5



AllTerra
Land Surveying Ltd.
www.allterra.ca
P.O. Box 762-0-101, Kelowna BC, V1Y 9Y1

PLAN EPP142247

DATE: 2024-11-15

SCALE: 1:500 METRIC

DATE: 2024-11-15

SCALE: 1:500 METRIC

DATE: 2024-11-15

SCALE: 1:500 METRIC

DATE: 2024-11-15

SCALE: 1:500 METRIC

DATE: 2024-11-15

SCALE: 1:500 METRIC

DATE: 2024-11-15

SCALE: 1:500 METRIC

DATE: 2024-11-15

SCALE: 1:500 METRIC

18
PLAN 896
BLOCK 5

9
PLAN 11656

2
1.13 km

SEC 4 TP 23

8
PLAN 11656

1
PLAN

B
PLAN
EPP59054

VALLEY ROAD N

THAT PART OF LOT 13 BLOCK 5 PLAN 896 SHOWN AS OKANAGAN HWY (PROPOSED) AND TWO PARTS AS 50 FT ACCESS ROAD ALL OF WHICH ARE DEDICATED AS ROAD ON PLAN 11656

A
PLAN
EPP59054

This plan lies partly within the Agricultural Land Reserve.
This plan lies within the jurisdiction of the Approving Officer for the City of Kelowna.
This plan lies within the Regional District of Central Okanagan.
The field survey represented by this plan was completed on the 15th day of November, 2024.
Jesse Cochrane, BCLS #1081